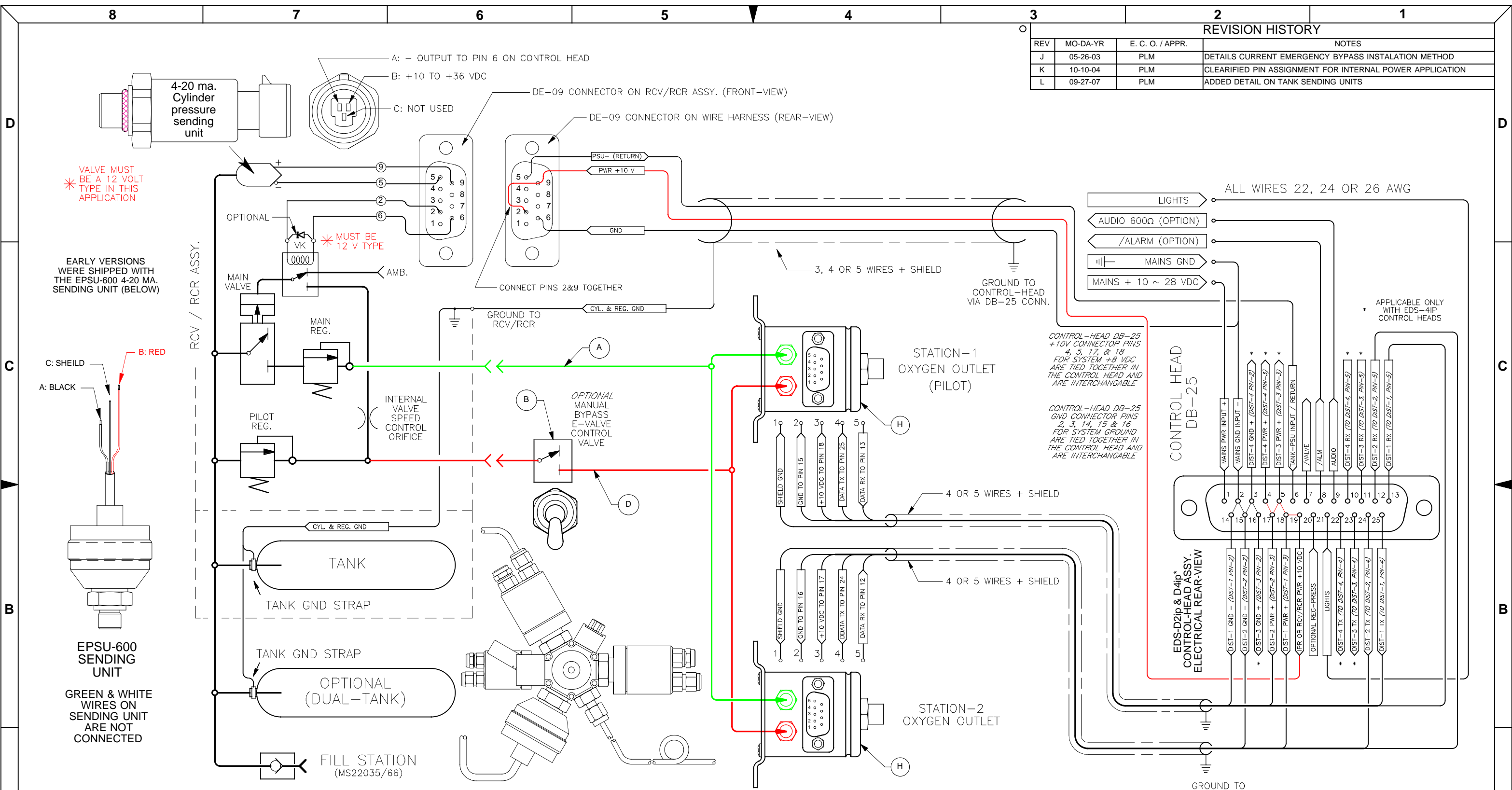


REVISION HISTORY			
REV	MO-DA-YR	E. C. O. / APPR.	NOTES
J	05-26-03	PLM	DETAILS CURRENT EMERGENCY BYPASS INSTALLATION METHOD
K	10-10-04	PLM	CLEARIFIED PIN ASSIGNMENT FOR INTERNAL POWER APPLICATION
L	09-27-07	PLM	ADDED DETAIL ON TANK SENDING UNITS



VALVE MUST BE A 12 VOLT TYPE IN THIS APPLICATION

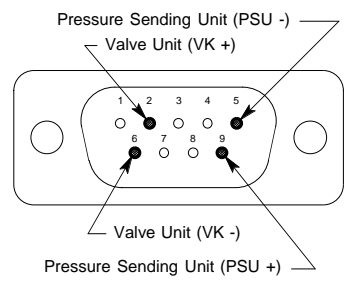
EARLY VERSIONS WERE SHIPPED WITH THE EPSU-600 4-20 MA. SENDING UNIT (BELOW)

C: SHIELD  
A: BLACK  
B: RED

EPSU-600 SENDING UNIT

GREEN & WHITE WIRES ON SENDING UNIT ARE NOT CONNECTED

RECOMMENDED PIN ASSIGNMENT RCV / RCR ASSY.	
1	- VK POWER +
2	-
3	-
4	-
5	PSU RETURN -
6	VK POWER -
7	-
8	-
9	PSU POWER +



DE-09 PIN ASSIGNMENT DIST UNITS.	
1	DIST-SHIELD
2	DIST POWER -
3	DIST POWER +
4	DIST TX
5	DIST RX
6	N/C
7	N/C
8	N/C
9	N/C

- A SWITCHED: 6-10 mm. MAIN REG. 1 BAR (15 PSIG)
- B MANUAL EMERGENCY OXYGEN BYPASS OXYGEN CONTRL
- C SWITCHED: 4.0 mm. MAIN REG. 1 BAR (15 PSIG)
- D SWITCHED: 4.0 mm. E-REG. REG. 2 BAR (32 PSIG)

2ip & 4ip

THIRD ANGLE PROJECTION.

RCV/RCR

POWERED FROM PIN 19

ISSUED:	MO-DA-YR	2 & 4 IP ELCTRO-PNEUMATIC SCHEM
DRAWN: PLM	11-10-00	
ENGINEER: PLM	DATE	DWG. #: EDSIP-050      REV L
APPR:	DATE	
SIZE B		SHEET 1 OF 1      DO NOT SCALE DRAWING