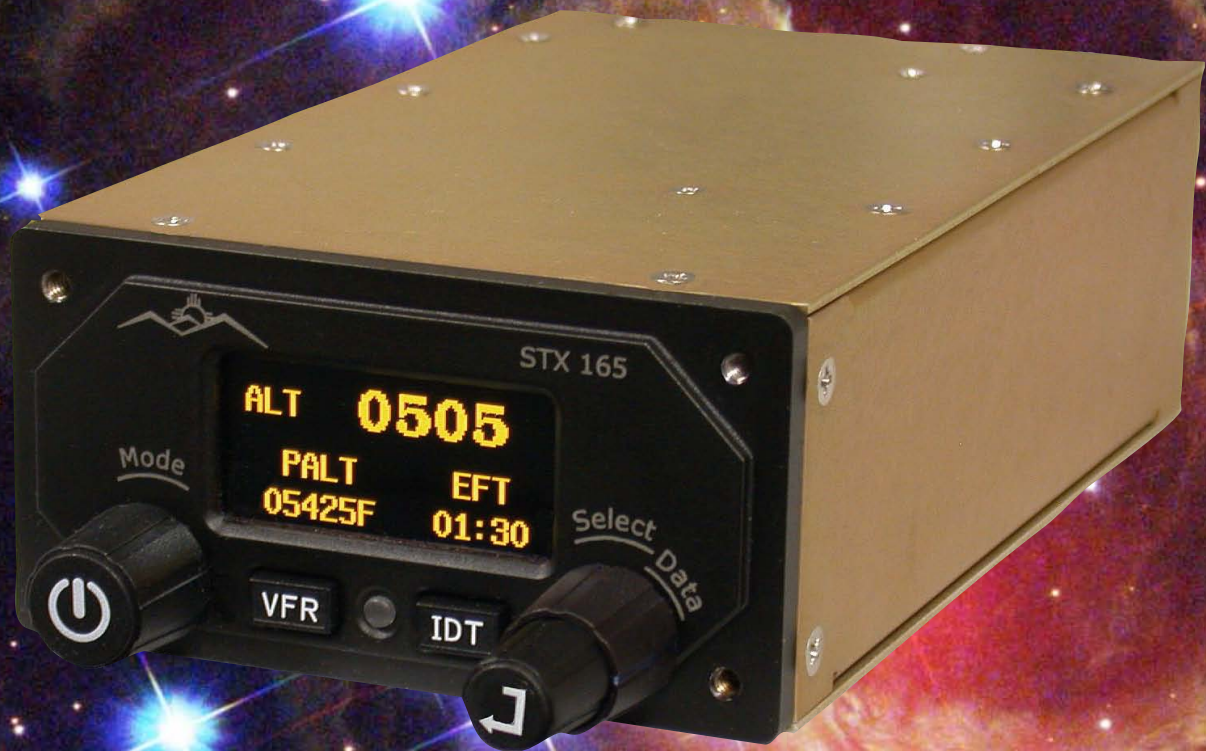


# STX 165 Transponder

## The Perfect ADS-B UAT Companion



**Compatible With Most Popular UAT Systems**

**Low Power Consumption**

**Built-in Encoder**

**Pressure Altitude Display**

**Three Timer Functions**

**Option OAT Probe**

**Density Altitude Readout**

**OAT Display**

**Icing Alert**



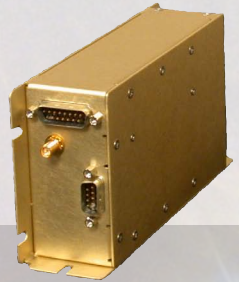


# STX 165 Mode C Transponder

The STX165 is the perfect companion transponder for your ADS-B UAT installation. The STX165 interfaces with most popular UAT systems and sends the transponder squawk code directly from the STX 165 to your UAT transceiver. This single point of entry eliminates the need to enter the squawk code twice and any possible resulting code setting errors. With a UAT Out solution the FAA recommends using a Mode C transponder over a Mode S, to eliminate multiple ADS-B position reporting.

The STX 165's solid state transmitter design provides 200 Watts nominal output with no warm up time. Because it's all solid state, power requirements are at an absolute minimum. And with it's built-in encoder, installation time and cost is greatly reduced. The STX 165 is simply the best choice for a UAT companion transponder.

A remote version, the **STX165R** is available for interface with existing navigation management systems. The STX165R will accept either Gilham Gray Code or RS-232 altitude input for Mode C operation. The STX165R can be mounted with or without the mounting tray either vertically or horizontally. All functions of the STX165R are remotely controlled via the RS-232 port.



## Technical Specifications

	STX 165 Panel Mount	STX 165R Remote
<b>Electrical</b>		
Input Voltage	11-33Vdc	11-33Vdc
Current Requirements:	430 mA @ 14 Vdc 210 mA @ 28Vdc (500PRF and 7777Code)	360 mA @ 14 Vdc 180 mA @28 Vdc (500PRF and 7777Code)
Power Output:	200 Watts Nominal	200 Watts Nominal
Transmitter Freq:	1090 KHz	1090 MHz
Receiver Freq:	1030 MHz	1030 MHz
Receiver Sensitivity:	-74dBm Nominal @90% reply rate	-74dBm Nominal @90% reply rate
<b>Mechanical:</b>		
Dimensions	1/2 3ATI Panel Cutout	3"H x 1.8"W x 6.9"L
Behind Panel Dim.	1.78"H x 3.5"W x 7.34"L 4.52cm x 8.89cm x 18.64cm	8.89cm x 4.57cm x 17.53cm
Weight	1.30 lbs (.59kg)	1.16 lbs (0.526kg)
<b>Inputs</b>		
Alt Encoder	Built-in 35K Encoder External RS-232 (Optional)	Grey Code RS-232
OAT Probe	SANDIA STP78 (Optional)	N/A
<b>Environmental:</b>		
Temperature:	-20 <sup>0</sup> to +55 <sup>0</sup> C	-20 <sup>0</sup> to +55 <sup>0</sup> C
Altitude	-1000 to 35,000 Ft	-1000 to 35,000 Ft
<b>Certification:</b>		
	DO160F DO 178B Level C TSO C74d TSO D88b (Encoder)	DO160F DO178B Level C TSO C74d

