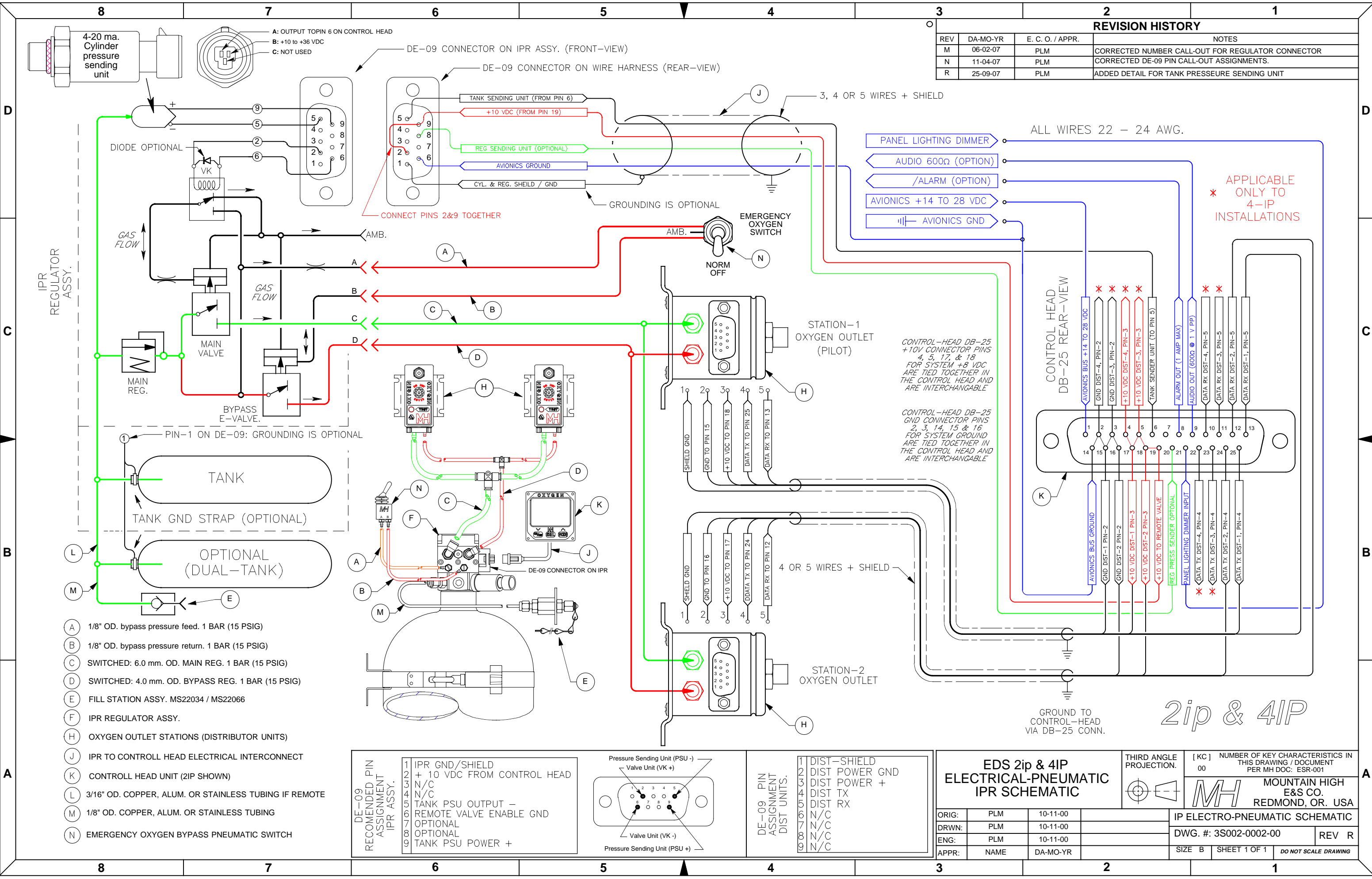


**REVISION HISTORY**

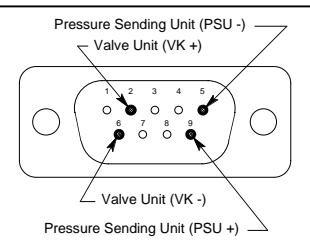
REV	DA-MO-YR	E. C. O. / APPR.	NOTES
M	06-02-07	PLM	CORRECTED NUMBER CALL-OUT FOR REGULATOR CONNECTOR
N	11-04-07	PLM	CORRECTED DE-09 PIN CALL-OUT ASSIGNMENTS.
R	25-09-07	PLM	ADDED DETAIL FOR TANK PRESSEURE SENDING UNIT



- (A) 1/8" OD. bypass pressure feed. 1 BAR (15 PSIG)
- (B) 1/8" OD. bypass pressure return. 1 BAR (15 PSIG)
- (C) SWITCHED: 6.0 mm. OD. MAIN REG. 1 BAR (15 PSIG)
- (D) SWITCHED: 4.0 mm. OD. BYPASS REG. 1 BAR (15 PSIG)
- (E) FILL STATION ASSY. MS22034 / MS22066
- (F) IPR REGULATOR ASSY.
- (H) OXYGEN OUTLET STATIONS (DISTRIBUTOR UNITS)
- (J) IPR TO CONTROL HEAD ELECTRICAL INTERCONNECT
- (K) CONTROL HEAD UNIT (2IP SHOWN)
- (L) 3/16" OD. COPPER, ALUM. OR STAINLESS TUBING IF REMOTE
- (M) 1/8" OD. COPPER, ALUM. OR STAINLESS TUBING
- (N) EMERGENCY OXYGEN BYPASS PNEUMATIC SWITCH

DE-09 RECOMMENDED PIN ASSIGNMENT IPR ASSY.

1	IPR GND/SHIELD
2	+ 10 VDC FROM CONTROL HEAD
3	N/C
4	N/C
5	TANK PSU OUTPUT -
6	REMOTE VALVE ENABLE GND
7	OPTIONAL
8	OPTIONAL
9	TANK PSU POWER +



DE-09 PIN ASSIGNMENT DIST UNITS.

1	DIST-SHIELD
2	DIST POWER GND
3	DIST POWER +
4	DIST TX
5	DIST RX
6	N/C
7	N/C
8	N/C
9	N/C

**EDS 2ip & 4IP ELECTRICAL-PNEUMATIC IPR SCHEMATIC**

ORIG:	PLM	10-11-00
DRWN:	PLM	10-11-00
ENG:	PLM	10-11-00
APPR:	NAME	DA-MO-YR

THIRD ANGLE PROJECTION.

[KC] NUMBER OF KEY CHARACTERISTICS IN THIS DRAWING / DOCUMENT PER MH DOC: ESR-001

**MH MOUNTAIN HIGH E&S CO. REDMOND, OR. USA**

IP ELECTRO-PNEUMATIC SCHEMATIC

DWG. #: 3S002-0002-00 REV R

SIZE B SHEET 1 OF 1 DO NOT SCALE DRAWING

*2ip & 4IP*

GROUND TO CONTROL-HEAD VIA DB-25 CONN.

CONTROL-HEAD DB-25 +10V CONNECTOR PINS 4, 5, 17, & 18 FOR SYSTEM +8 VDC ARE TIED TOGETHER IN THE CONTROL HEAD AND ARE INTERCHANGABLE

CONTROL-HEAD DB-25 GND CONNECTOR PINS 2, 3, 14, 15 & 16 FOR SYSTEM GROUND ARE TIED TOGETHER IN THE CONTROL HEAD AND ARE INTERCHANGABLE

APPLICABLE ONLY TO 4-IP INSTALLATIONS

ALL WIRES 22 - 24 AWG.