



Craggy Aero Ultimate Le®

Craggy Aero, LLC
3901 River Court
Hornbrook, CA 96044 USA

Craggy Aero Ultimate Le® Manual
Table of Contents

1.0 Introduction

2.0 Technical Specifications

3.0 Compatible Devices & Software

4.0 System Components

5.0 Installation

6.0 Operation

7.0 Software

8.0 Wiring Diagram

9.0 Warranty

1.0 Introduction

The Craggy Aero Ultimate Le is an Embedded Flight Computer running state of the art hardware and software.

It offers:

- Excellent Sunlight readability
- SeeYou Mobile, StrePla, WinPilot PRO or ADV Software, LK8000. The SeeYou Mobile, StrePla, and the WinPilot Software Manual is a companion manual for this instrument.
- Connection with many existing Hardware Variometers, GPS, and IGC GPS Loggers.
- Easy to use Micro Ball Track Mouse Input or Touch Pad, usable with either hand.
- Backlight potentiometer or 10K potentiometer for adjustment of the screen brightness



The Yellow Triangle is shown for part of the manual which should be read very carefully




Note with red triangle describe procedures which are critical and may result in loss of data or any other critical situation

Bulb icon is shown, when useful hint is given for the reader



2.0 Technical Specifications

- High Performance Embedded Technology 806 MHz Processor
- Sunlight readable screen 6.5" Diagonal VGA 640 X 480 resolution, true VGA
- 1400 nits brightness at full backlight adjustable by Potentiometer
- Input Device MicroTrack handheld trackball mouse or Touch Pad.

- Power Draw 400mA to 850mA (.4 amp to .85 amp) depending on the backlight setting.
 - No exposed wiring board on the back of the instrument. Connectors include DB9 male serial input and power for a Serial GPS or Flight recorder. DB15 male for power and potentiometer.
 - 3.5 mm speaker socket
 - Temperature range -45C to 85C (-49F to 185F)
 - Weight 1 lb 10 oz
- 13.8 volts DC Absolute Maximum Voltage  This is the maximum voltage that the Backlight inverter will accept. Voltage above this max may limit the life of the inverter.

2.1 Interfaces

- RS232 interface DB9
- DB15 Power & digital Potentiometer
- USB for Mouse input
- USB for data transfer using USB memory stick
- Audio Speaker Connector

3.0 Compatible Devices and Software

- CAI 302, LX1600, LX 1606, Borgelt B500 VE
- IGC Approved Flight Recorder with Serial NMEA output
- Serial GPS, Flarm WinPilot ADV
- Software SeeYou Mobile PNA, WinPilot PNA, Pocket StrePla, LK8000, Pocket FMS

4.0 System Components

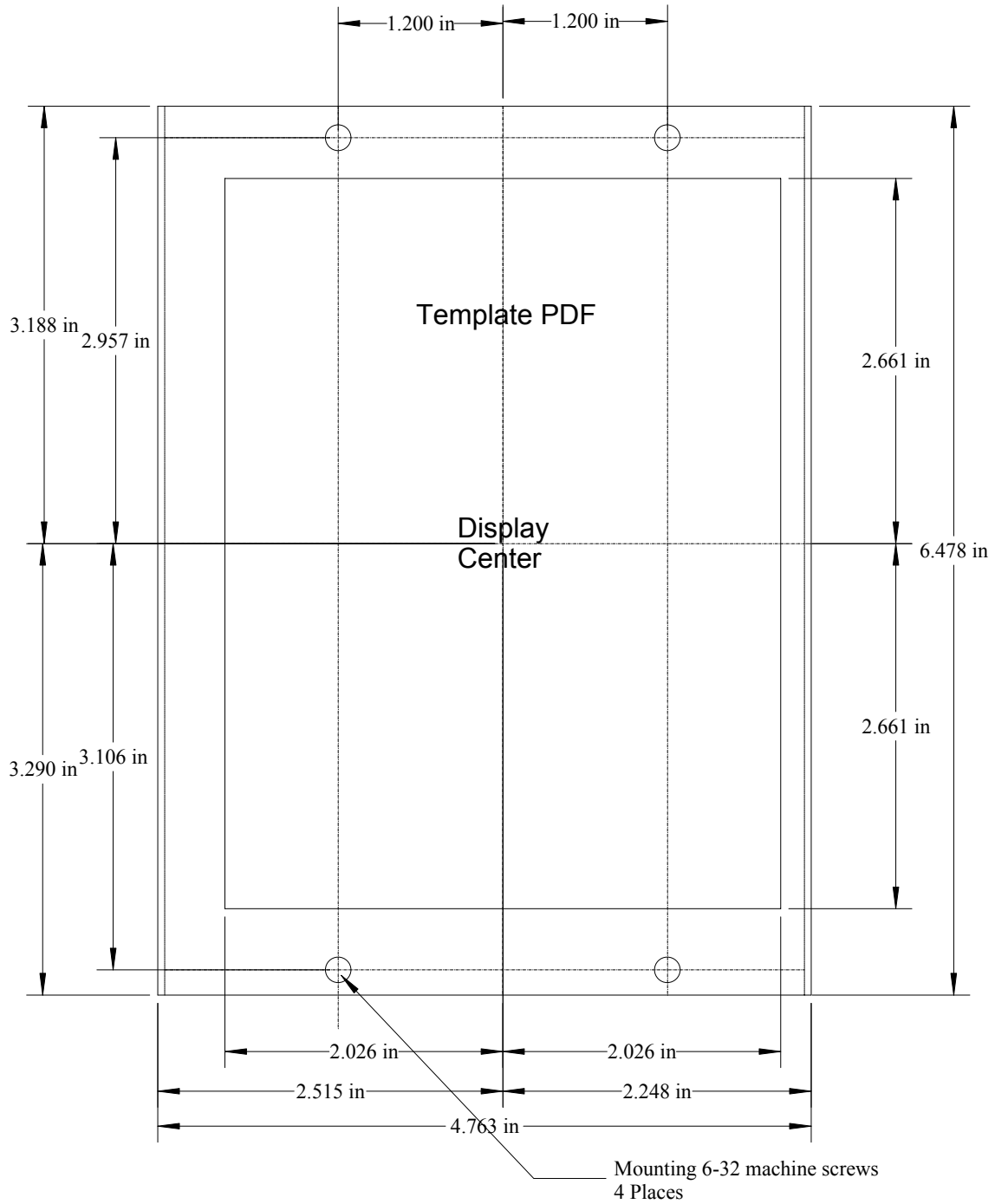
- Display
- Digital Potentiometer
- Panel Mount USB Port
- Speaker

5.0 Installation

5.1 Full size template to modify your instrument panel for the installation of the Ultimate Le. Cutout for the screen and drill four holes for the mounting Screws.

Download full size pdf template from:

<http://www.craggyaero.com/Drawings/UltimateLe%20Dimensions.pdf>



5.2 USB Panel Mount

Drill a hole in the panel and install the USB panel mount, plug the other end into one of the USB ports on the Ultimate Le.

5.3 10K Potentiometer installation drill .25" hole in the panel.

6.0 Operation

6.1 Operating the Ball Track Mouse or Touch Pad

Ball Track Mouse



The hand held ball track mouse plugs into either of the USB ports on the back of the Ultimate Le. It fits nicely in either hand. It has three usable inputs, trigger (actuated with the index finger), ball to position the mouse arrow, right button depending on software.

- Thumb Ball moves the mouse arrow on the screen
- Trigger selects items and menu functions
- Holding the trigger and moving the mouse button is used to move Nav Boxes and the Pan and GOTO functions depending on software used.
- Left Button not used.
- Right Button not used



Don't hold the mouse tight. Move the ball with your thumb to place the arrow. Take you thumb off the ball and it quits moving and it will not move in turbulence. Click with the trigger to highlight. Place arrow on item and click right button to select.

Example:

The hardest task is to turn the glider in the simulator. Position the arrow on the glider. Click trigger and hold turn the arrow around with the ball.

Touch Pad - The Ergonomic Touchpad does everything your mouse does.



Right Click: Tap in the upper right hand corner.
Left Click: Tap anywhere else.
Drag and drop & highlight "Quickly!" tap twice holding down and dragging your finger on the second tap



Scrolling: Drag along the right edge to scroll documents

You never run out of dragging space. If you drag or draw something to the very edge of the touchpad, it automatically senses you are at the edge and gives you 3 seconds to lift up and reposition your finger.

6.2 Power the Ultimate Le, it takes about 10 to 30 seconds for the Ultimate Le to boot, depending on the CE image installed in the computer. The Windows Screen will appear. The menu bar is hidden at the bottom of the screen, Move the mouse arrow to the bottom left of the screen and the start button will appear. Click the Icons on the Desktop to start your programs.

6.3 10K Potentiometer

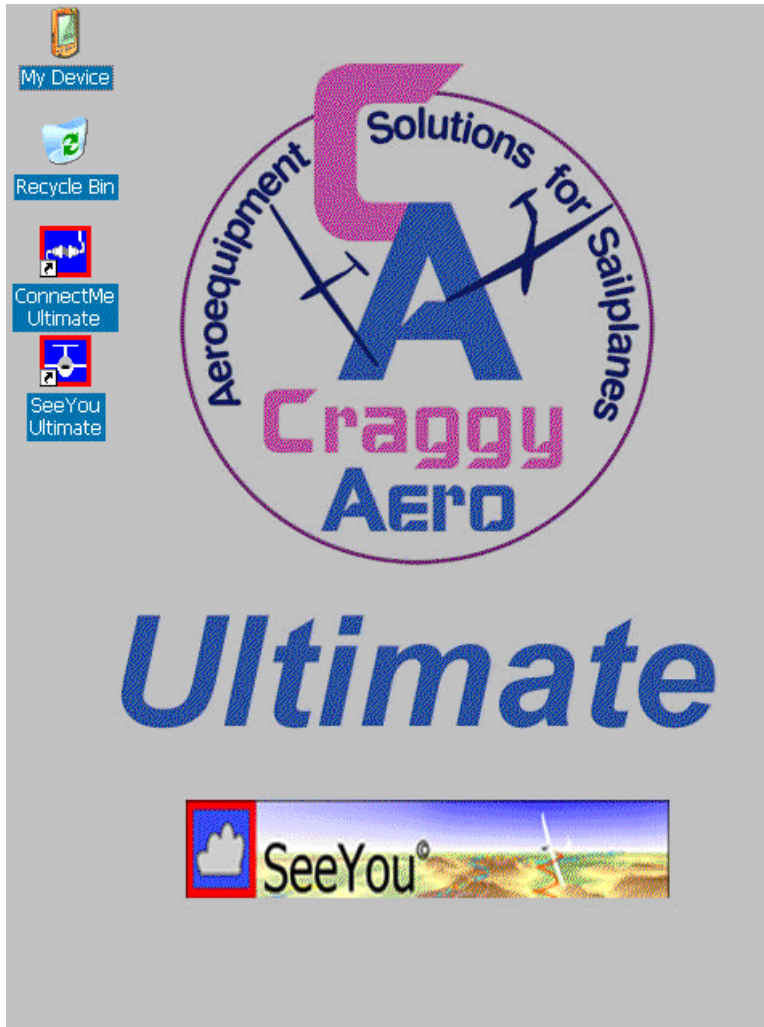
The Ultimate Le screen brightness is adjusted by the supplied POT.



7.0 Software



Click the SeeYou Icon to start the Program.



Program Update Instructions

Instructions:

1. Download zip file below to your desktop computer
2. Unzip the file to your USB Traveler Drive
3. Place USB Traveler Drive in your Ultimate Le
4. Power Up the Ultimate Le
5. Files will AutoCopy to you Ultimate Le
6. Remove the USB Traveler and delete the files on the traveler. It will autocopy everytime you connect to the Ultimate.
7. Start SeeYou Mobile
8. Go Menu - About
9. Check your Key and reenter if necessary

To Enter Key

1. Place cursor in the Name field
2. Click the keyb folder on the bottom of the screen
3. Enter your name as shown on the Key email
4. Click OK
5. Place Cursor in the Registration Key field
6. Click the keyb folder on the bottom of the screen
7. Enter the key (make sure and enter the - dashes)
8. Click OK
9. Click Register
10. Click OK
11. Exit SeeYou Mobile

The page should show:

Program serial number: xxxxxxxxxx

Free upgrades until: xx/xx/xx

Exit SeeYou Ultimate Le

Before you shut down the Ultimate Le You may need to save the registry so you Name and Key will be remembered !!!!

!!!! Go Start - Programs - Colibri Tools-Save Reg before shutting down the Ultimate Le, The will set your SETTINGS folder if it was changed and save the screen rotation set in the SeeYou Mobile Program.

WinPilot ADV or PRO:

The Ultimate Le operating system is very similar to the Windows system on your desktop computer.

The task bar at the bottom is auto hide. Move the mouse arrow to the lower left and the Start icon will appear click and move to programs and click the Menus will appear.

To Start the Simulator or WinPilot click on the item.

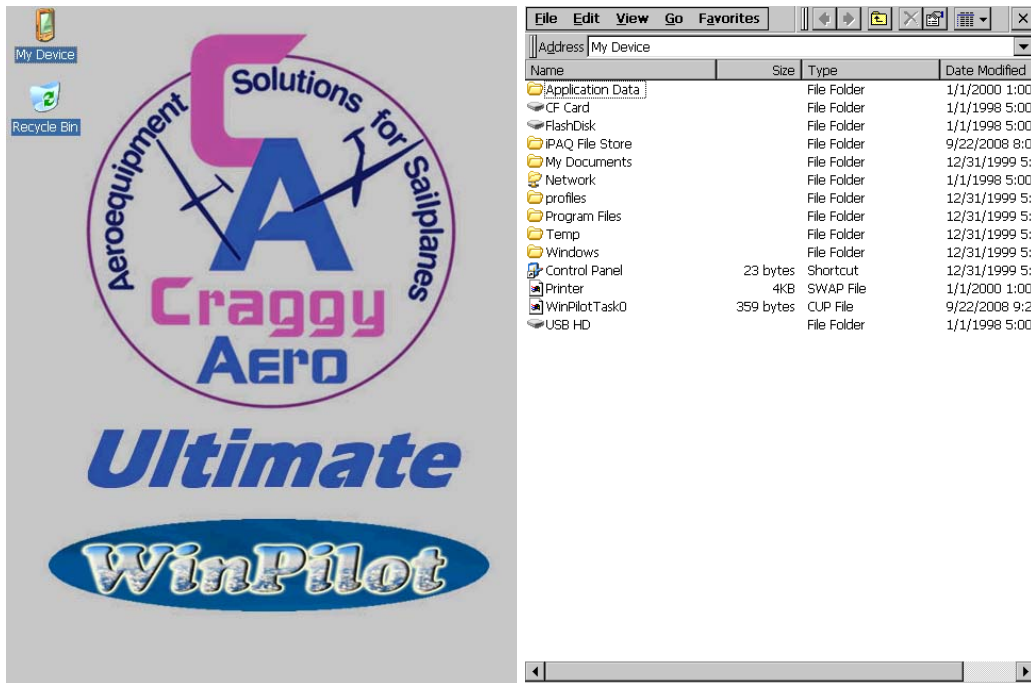


A companion to this manual is the WinPilot Manual. This section deals with specific differences not in the WinPilot Manual.

Program Updates, Aviation Data, terrain maps and user waypoints are downloaded to you Desktop PC and transferred to the USB Flash Drive.



All programs, Aviation Data, terrain maps and user waypoints are stored in the FlashDisk\AutoCopy\Folder of the Ultimate Le.

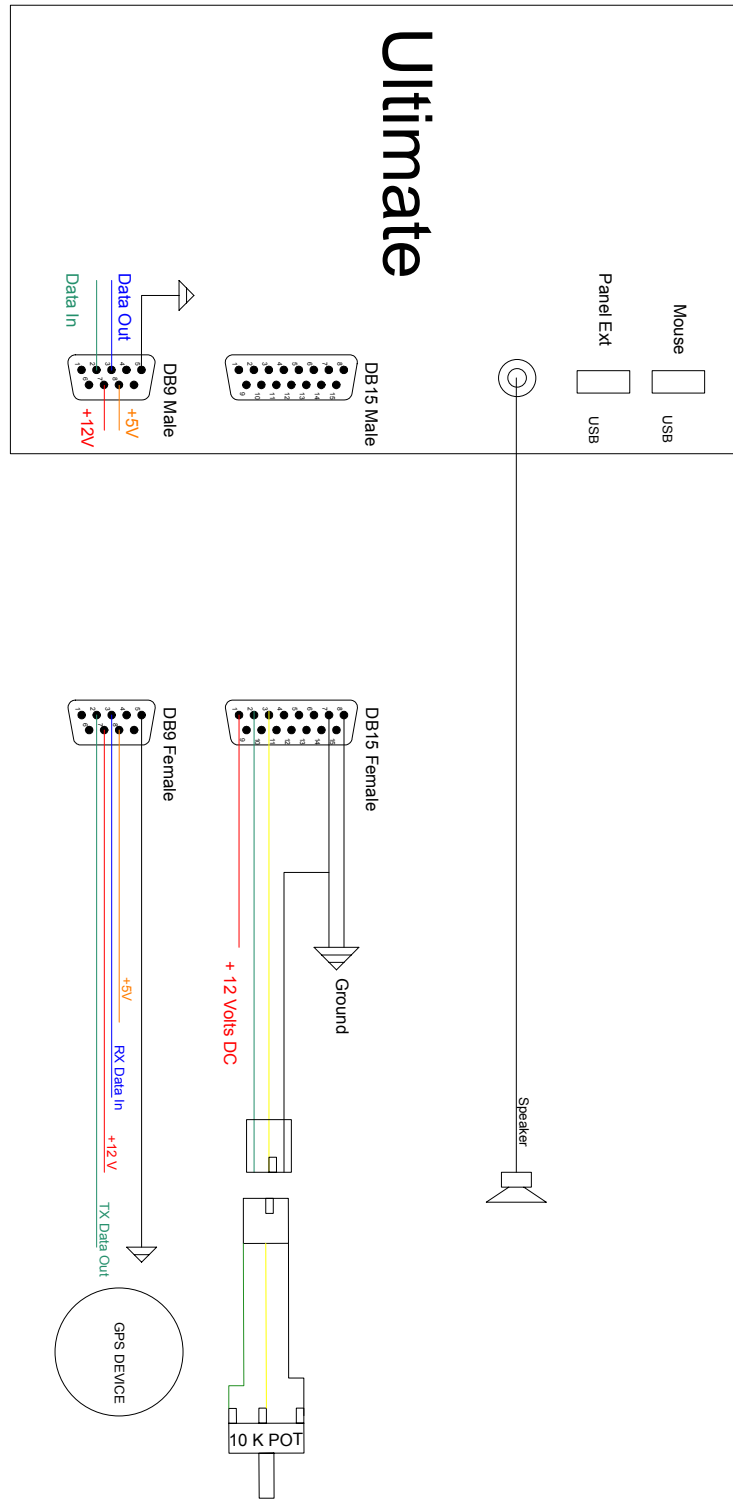


Files can be copied using the File Explorer resident in the Ultimate Le from the USB Flash. Access this by double clicking on the My Device icon on the Ultimate Le Desktop. The File Explorer will appear. Cut and paste files from the USB drive.


Specific User turn points, Aviation Data and terrain maps should be copied to the FlashDisk\AutoCopy\My Documents folder on the Ultimate Le. All terrain maps for the world are in the FlashDisk\Maps Folder, only copy the terrain maps that you intend to use to the AutoCopy\My Documents Folder.

User Turn points can be downloaded from <http://soaringweb.org/TP> Copy the specific

8.0 Wiring



8.1 Connectors

- 2 USB Connectors on the back of the instrument. Input Device and Panel extension.
- Speaker 3.5 mm jack connect 8 ohm speaker.
- DB15 Connector Power for the Ultimate Le +12V (**13.8V Absolute Max Voltage**) , Ground, Dimming POT. Dimming Pot must be connected for display to work.
- DB9 Serial Port. If NMEA GPS device is already powered only connect RX, TX and Ground. Devices that need power can get power from the DB9 Pin 7 +12V or Pin 8 +5V to get power from the Ultimate Le. Ground also needs to be connected.

9.0 Warranty

The Ultimate Le system is designed for VFR use only as an aid to prudent navigation. All information is presented for reference only. Terrain, airports and airspace data are provided only as an aid to situation awareness.

This product is warranted to be free from defects in materials and workmanship for two years from the date of purchase. Within this period Craggy Aero, LLC will, at its sole option, repair or replace any components that fail in normal use. Such repairs or replacement will be made at no charge to the customer for parts and labor; the customer will be responsible for any transportation costs. This warranty does not cover failures due to abuse, misuse, accident, or unauthorized alterations or repairs.

THE WARRANTIES AND REMEDIES CONTAINED HERIN ARE EXCLUSIVE AND IN LIEU OF ALL OTHER WARRANTIES EXPRESSD OR IMPLIED OR STATUTORY, INCLUDING ANY LIABILITY ARISING UNDER ANY WARRANTY OF MERCHANTABILITY OR FITNESS FOR A PARTICULAR PURPOSE, STATUTORY OR OTHERWISE.

IN NO EVENT SHALL CRAGGY AERO, LLC BE LIABLE FOR ANY INCIDENTAL, SPECIAL, INDIRECT OR CONSEQUENTIAL DAMAGES, WEATHER RESULTING FROM THE USE, MISUSE OR INABILITY TO USE THIS PRODUCT OR FROM DEFECTS IN THE PRODUCT. CRAGGY AERO, LLC retains the exclusive right to repair or replace the unit at its sole discretion. SUCH REMEDY SHALL BE YOUR SOLE AND EXCLUSVIE REMEDY FOR ANY BREACH OF WARRANTY.

